

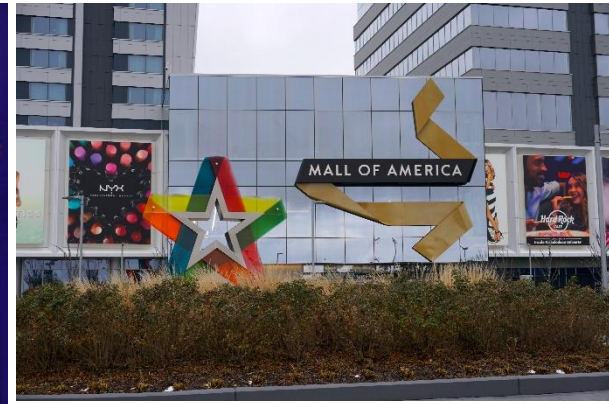
# Minnesota, Mayo Clinic and a Global Destination for Health and Wellness



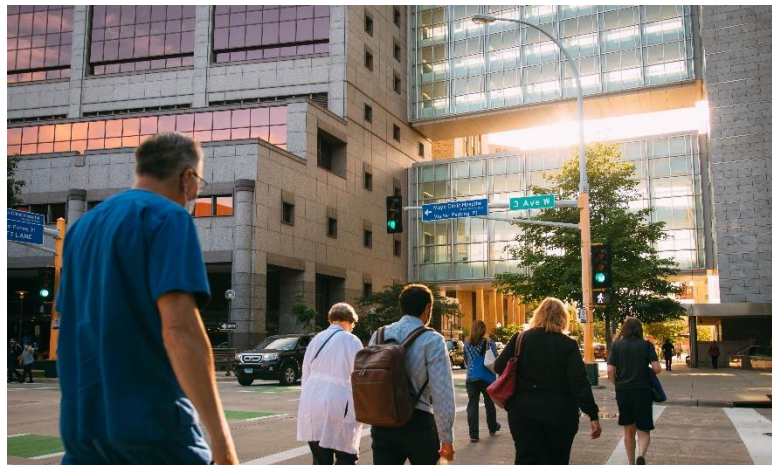
DMC

Destination Medical Center  
Rochester, MN

# MINNESOTA



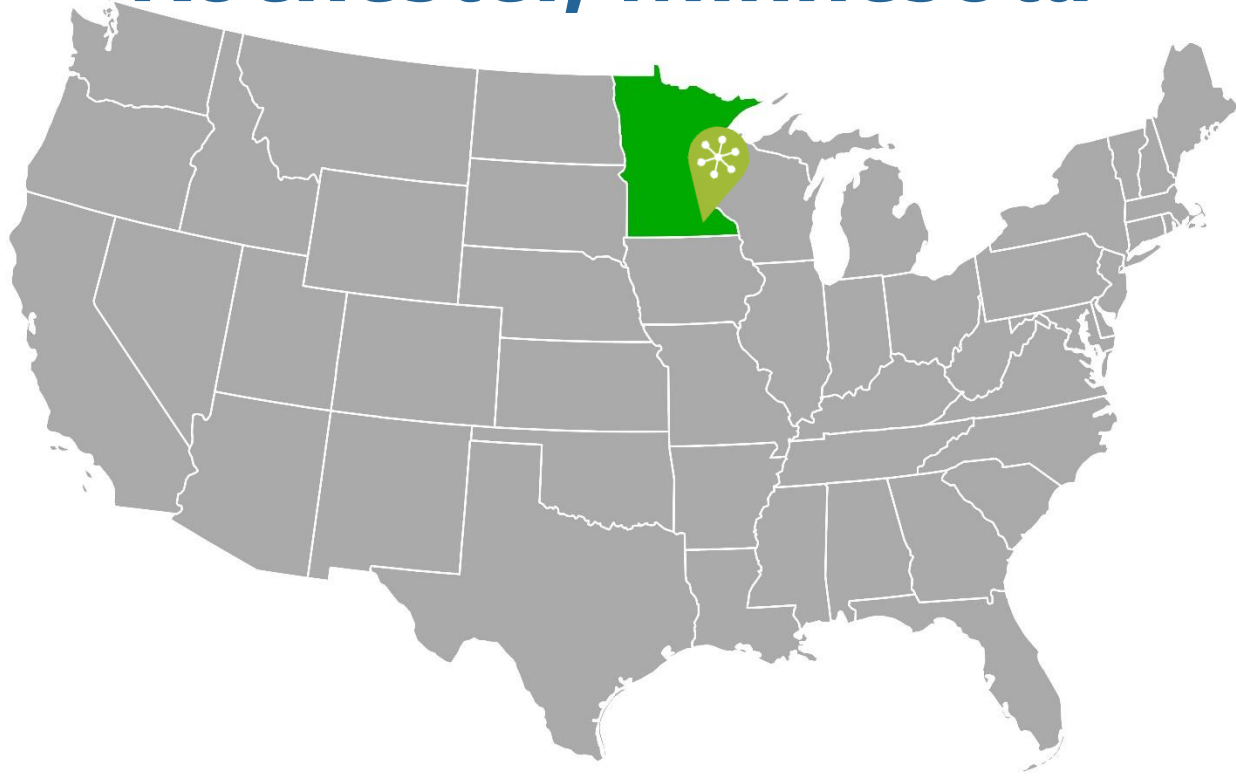
# MINNESOTA



**Mayo Clinic #1 in Rochester,  
Minnesota**



# Rochester, Minnesota





# Rochester, Minnesota



- Minnesota's 3<sup>rd</sup> largest city
- Global headquarters of Mayo Clinic
- #5 Best Places to Live
- #3 most innovative cities in America
- One of the most recession-resistant cities in the country
- A diverse and international city
- Home to international airport – servicing American, Delta and United Airlines





# DMC

Destination Medical Center

## MISSION

**With Mayo Clinic at its heart, the Destination Medical Center (DMC) initiative will be the catalyst to position Rochester, Minnesota as the world's premier destination center for health and wellness; attracting people, investment and jobs to America's city for health and supporting the economic growth of Minnesota and its biosciences sector.**



# WHY DESTINATION MEDICAL CENTER ?

## CHALLENGE

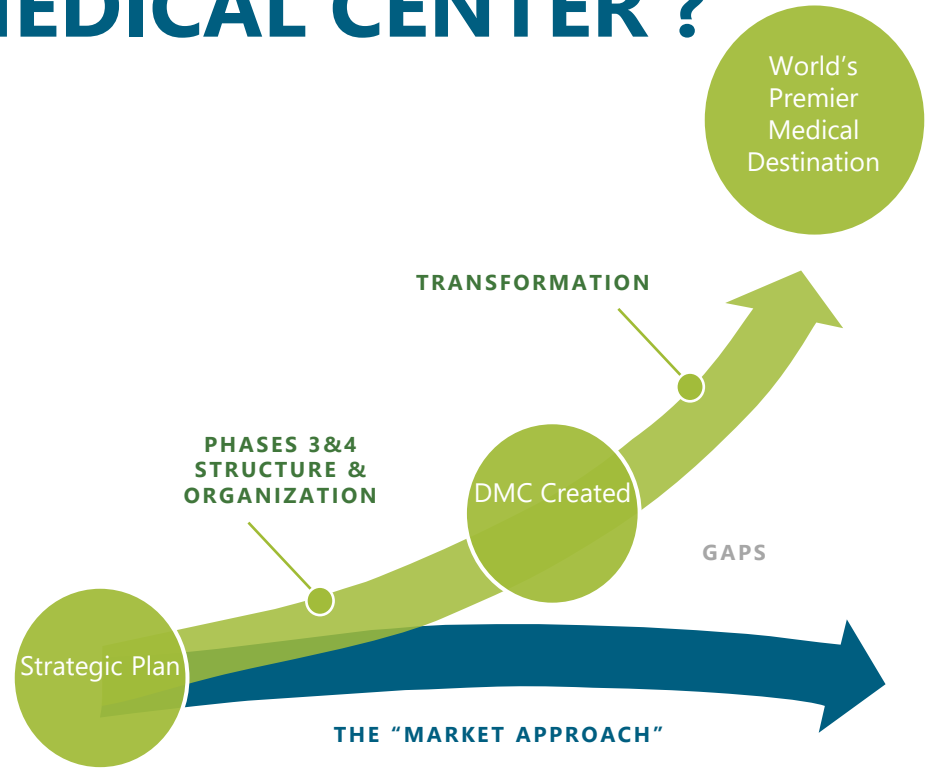
Rochester was not meeting patient, visitor, or resident expectations

## OPPORTUNITY

Mayo Clinic is willing to make Rochester its global destination center and investing \$3.5 billion

## PUBLIC FINANCING GAP

With total private investments of \$5.6 billion, Rochester lacked the capacity to finance needed public infrastructure



# DESTINATION MEDICAL CENTER IS THE LARGEST ECONOMIC DEVELOPMENT INITIATIVE IN MINNESOTA'S HISTORY

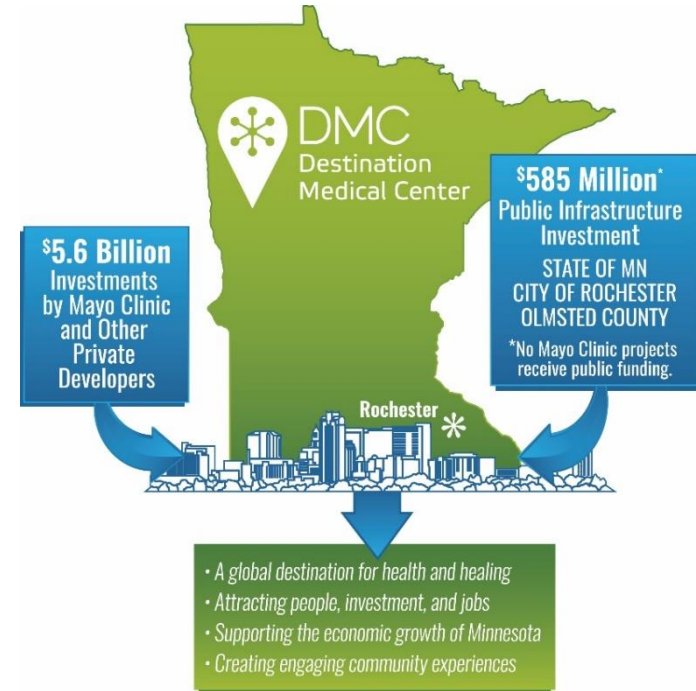
Mayo Clinic...\$3.5 Billion\*

Other Private Investment...\$2.1 Billion\*

Public Investment... \$585 Million\*

Transforming Rochester, Minnesota into the global destination for health and wellness.

\*Over 20-year time span





# EIGHT AREAS OF FOCUS

Core experiences that address demands which will contribute to Rochester becoming “America’s City for Health.”



LIVABLE CITY,  
RETAIL, DINING



HOTEL &  
HOSPITALITY



ENTERTAINMENT,  
ARTS & CIVIC  
CULTURE



COMMERCIAL  
RESEARCH &  
TECHNOLOGY



HEALTH &  
WELLNESS



LEARNING &  
ENVIRONMENT



SPORTS RECREATION  
& NATURE



TRANSPORTATION



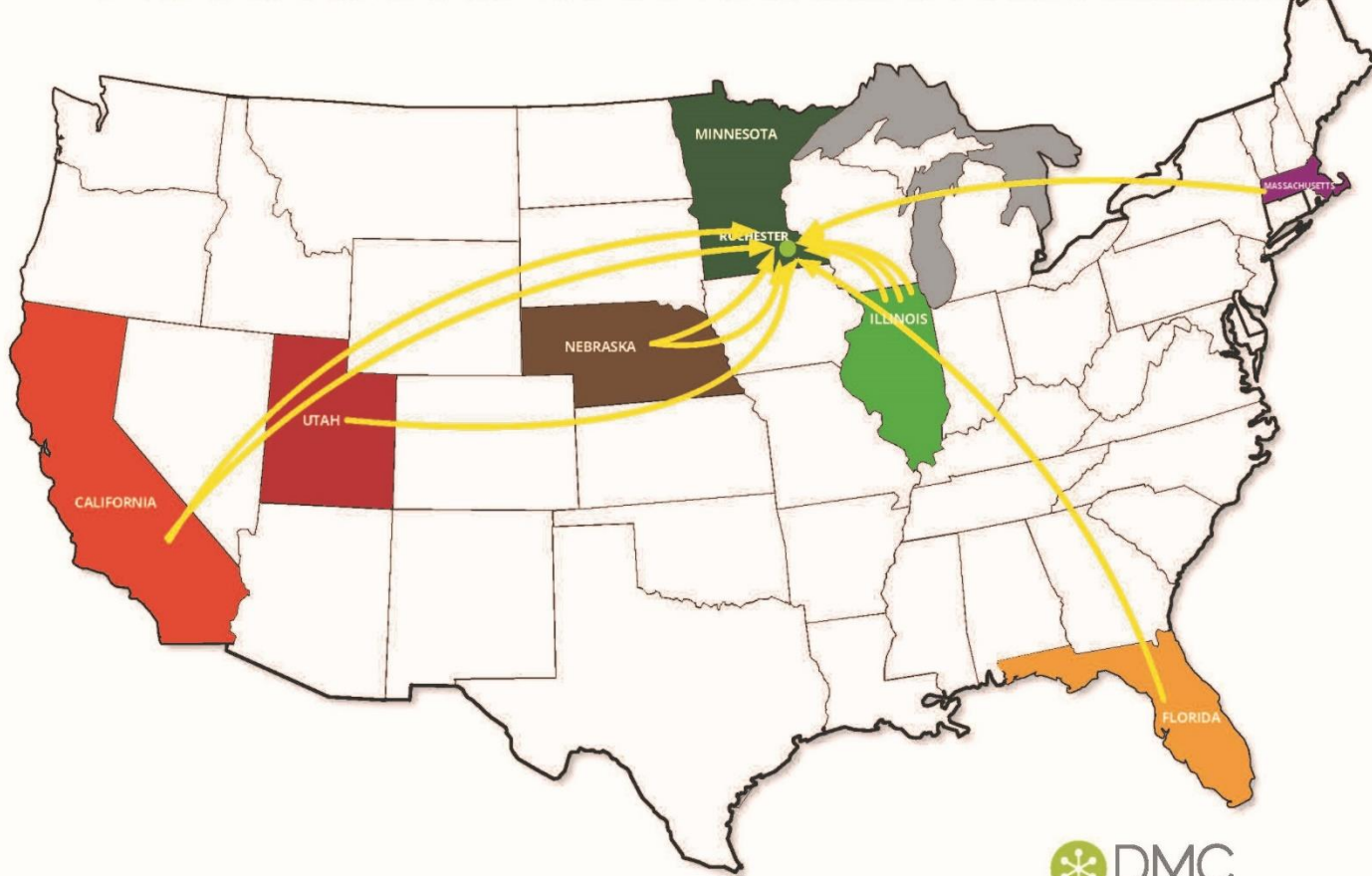


**Destination Medical Center Development District**

ar11





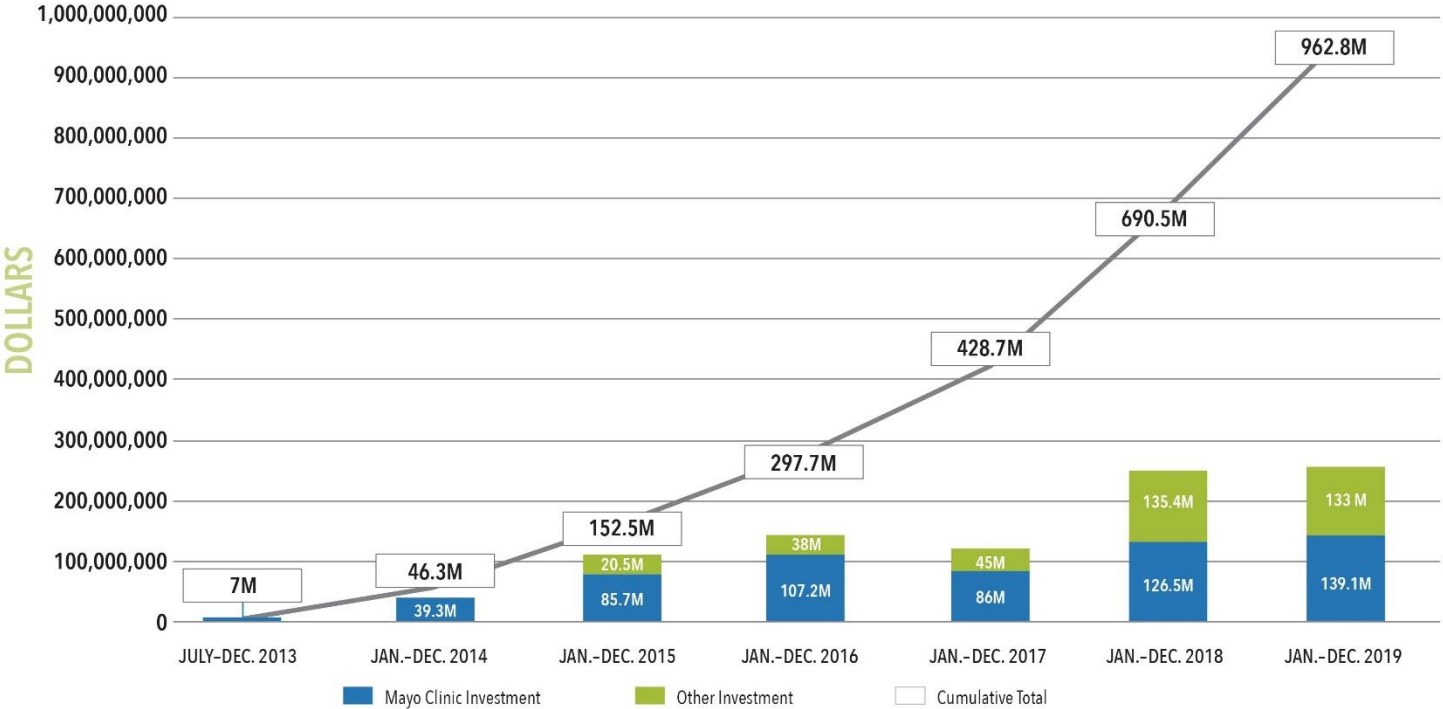


# Attracting Private Investment

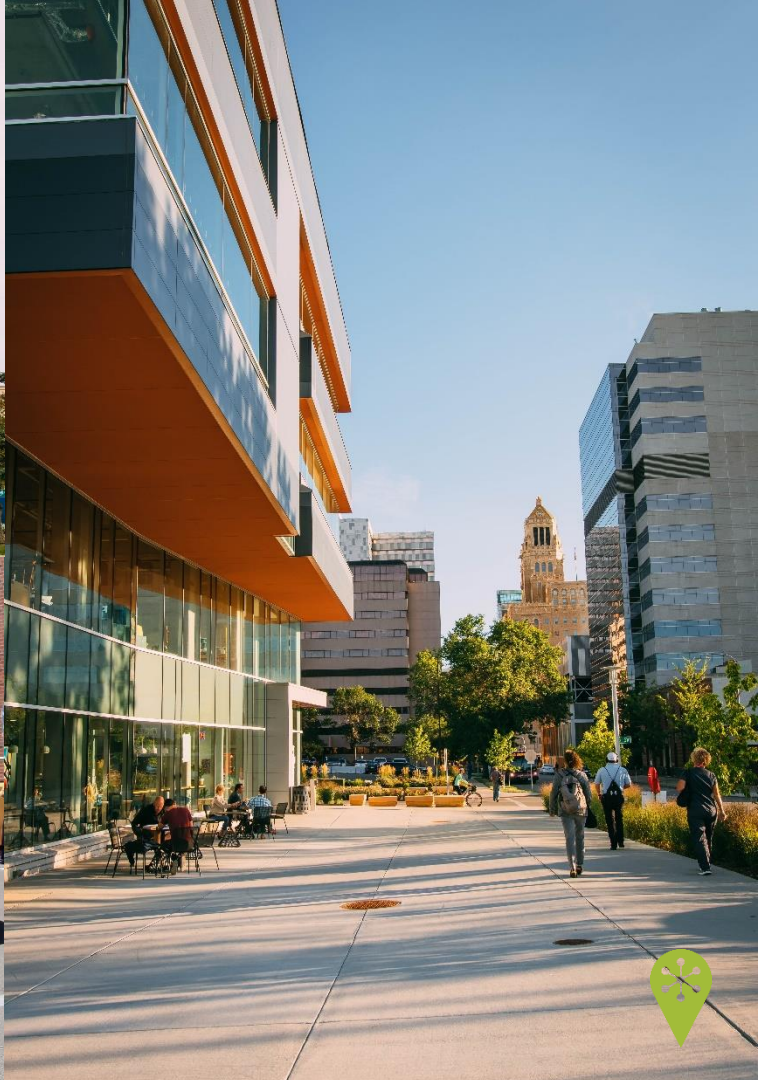


# Nearly \$1 Billion in Private Investment in Phase 1

## DMC PRIVATE INVESTMENT (Construction Costs Spent To Date)







One of Destination Medical Center's priorities is development within **Discovery Square**, a 16-block, fully integrated live, work, play sub-district in downtown Rochester.

Discovery Square is the economic engine for DMC and is attracting the world's leading medical practitioners, educators, researchers and businesses, including Boston Scientific, Epic, Philips, Wuxi Diagnostics, RION Health (a Mayo Clinic start-up), Google, BioSig Technologies, nference. This list continues to grow.

Discovery Square is the only place where businesses are invited to experience and be a part of Mayo Clinic's culture of collaboration.





# New Health Care Innovation Campus



**One Discovery Square Development:** Designed with collaboration in mind to support the acceleration and translation of the most promising health-related therapies and technologies

**Mayo Clinic** is anchor tenant, supporting:

- Advanced Manufacturing of Regenerative Products
- Biomedical Technology
- Advanced Diagnostics Laboratory

One Discovery Square is also home to world-leading health organizations and the University of Minnesota Rochester.

The campus is growing.

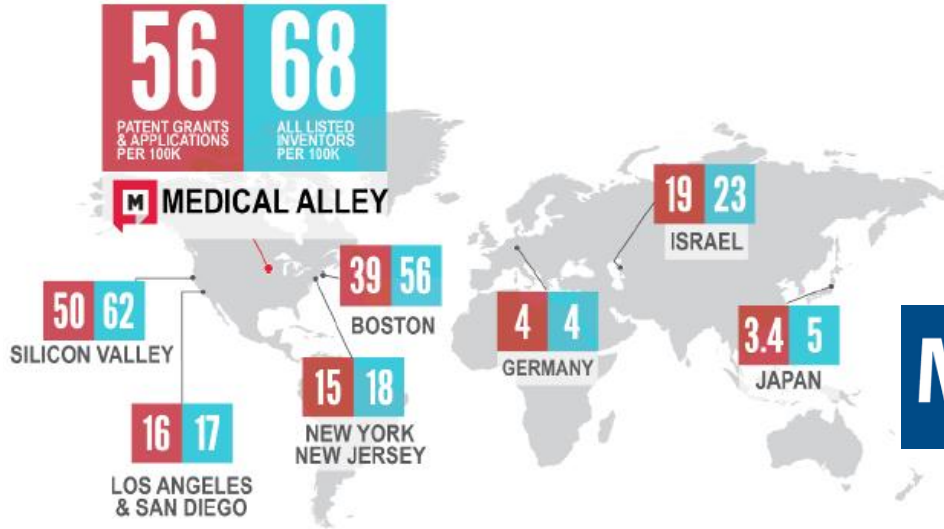


# Discovery Square Health Care Innovation Campus Phase 2 Construction, November 2020





# MEDICAL ALLEY: WORLD'S #1 HEALTH TECHNOLOGY CLUSTER FOR INNOVATION



Medical Alley is The Global Epicenter of Health Innovation and Care.™ In Medical Alley, you will find the world's leading health technology innovation cluster, the highest ranked hospital, and the globally recognized Destination Medical Center.



# Growing the Entrepreneurial and Start-up Ecosystem in Rochester and Southeast Minnesota

- The start-up ecosystem in Rochester is emerging and poised for growth, led by a partnership with Destination Medica Center (DMC), Mayo Clinic, Medical Alley and others, providing a network of mentors, start-up services and space.
- In the region, DMC has partnered with 15 communities to support entrepreneurship across Southeast Minnesota (the E1 Network).



# In addition to health and social services, manufacturing and agriculture are top industries in Southeast Minnesota





# Future Forward

With an increased downtown Rochester residential population, DMC's future planning includes new transportation and transit options such as bus rapid transit, improved bike and pedestrian access and a test site for autonomous vehicles.







# URBAN Evolution



A podcast by **Destination Medical Center**

[urbanevolutionpodcast.com](http://urbanevolutionpodcast.com)

Learn more about the formation of Destination Medical Center and Mayo Clinic's commitment to this initiative and the future of health care from Dr. Clark Otley, Chief Medical Officer of the Mayo Clinic Platform and Medical Director of Mayo Clinic's Department of Business Development.



# Summary:

- Destination Medical Center (DMC) is Minnesota's largest economic development initiative
- The \$5.6 billion public-private partnership includes \$3.5 billion from Mayo Clinic and \$2.1 billion from other private investors over 20 years
- The State of Minnesota, City of Rochester and Olmsted County are providing a combined \$585 million in public investment for infrastructure as part of the DMC effort
- DMC is transforming Rochester, Minnesota into the global destination for health and wellness
- Rochester has a top-tier ranking in livability and is one of the most recession-resistant cities in America
- Mayo Clinic in Rochester is ranked as the #1 hospital in the United States and the World by U.S. News & World Report and Newsweek
- Among DMC's focus is the growth of the biosciences sector
- Downtown Rochester is home to a new state-of-the-art healthcare innovation campus with Mayo Clinic as an anchor tenant
- In addition to health and social services, manufacturing and agriculture are leading industries in Southeast Minnesota



# Contact



## Patrick Seeb

Executive Director

Destination Medical Center Economic Development Agency

[patrickseeb@dmceda.org](mailto:patrickseeb@dmceda.org)

[www.linkedin.com/in/patrick-seeb](http://www.linkedin.com/in/patrick-seeb)

[dmc.mn](http://dmc.mn)

[@dmcmn](#)





# THANK YOU



DMC

Destination Medical Center  
Rochester, MN

